

# DESIGN N STITCH

*with Quilters Select*

## Skill Builder Series with Quilters Select

### Technique Featured:

- Center options:
  - Fussy Cut
  - Mixed Match
  - Economy Block

### Pro-Tips:

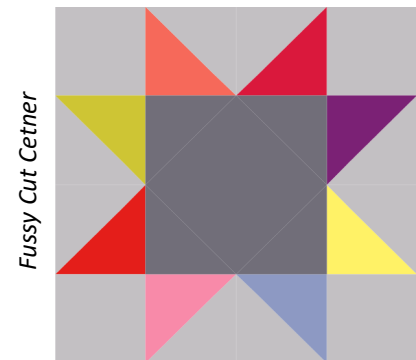
- The options included are intended as options/skill building information. The fabric yardage for the basic quilt layout does not include reference to these add-ons.
- Read through all instructions before beginning.
- Seam Allowance= 1/4"

## Fussy Cut

*Fussy Cutting is simply the intentional selection of an area of the fabric in order to highlight a portion of the print. This could mean a motif, centering a stripe or large element of an all over print..*

- The center unit of this block is 6 1/2" with a 6" finish. To create a fussy cut center, simply select an area of fabric to highlight.
  - Option 1: Place a 6 1/2" traditional ruler over the motif, centering or aligning in the space as desired. Cut around the 6 1/2" ruler.
  - Option 2: Place Quilters Select Square It Ruler over the fabric. Position the motif/pattern within the fabric as desired. Use the interior of the ruler to cut the 6 1/2" unit from the fabric.

Tip: The Square It Rulers are numbered from left to right around the outer edge. The inside is numbered from center out making it easy to accurately center motif placement.



QUILTERSSELECT.COM

Pattern design and layout powered by

Design N QUILT™

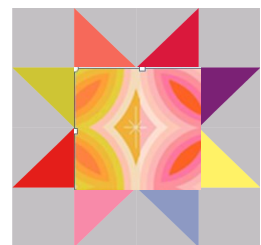
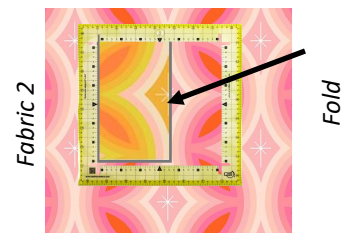
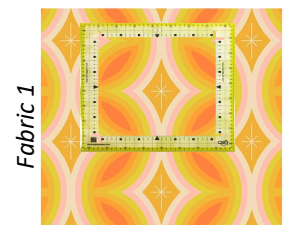
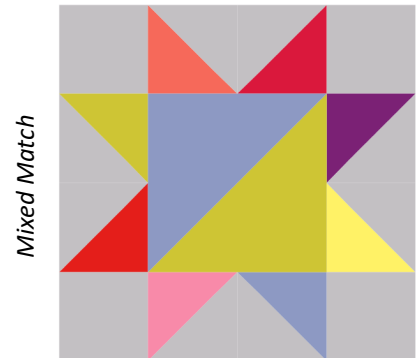
# DESIGN N STITCH

*with Quilters Select*

## Mixed Match

A Mixed Match refers to joining two colorways of the same fabric precisely along the design repeat in order to create the illusion of the unit being one blended fabric. This uses a combination fussy placement/fussy cutting technique.

- The center unit of this block is 6 1/2" with a 6" finish. To create a Mixed Match center begin with two colors of the same fabric print.
  - Option 1: Place a Square it Ruler over Fabric 1, randomly select an area or be intentional to highlight an area/motif. Cut inside the 6 1/2" ruler.
  - Fold the square down the length, wrong sides together and press well. Place a length of RNK Perfect Stitch tape along the edge of fold.
  - Position Fabric 1 over Fabric 2, aligning it so that the patterns line up exactly. Secure in place with the tape. Cut around the tape basted fabrics using the 6 1/2" square.
  - Flip back the folded fabric and stitch along the fold line. Trim away 1/4" from the stitching line. Fold Fabric 1 back into place and press.
- Option 2: Follow same process at Option 1, using a standard 6 1/2" ruler.
- Option 3: Follow process 1 or 2, folding Fabric 1 on the diagonal.



# DESIGN N STITCH

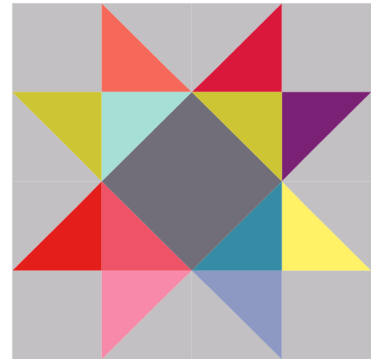
*with Quilters Select*

## Economy Block

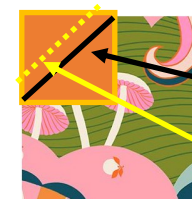
*The Economy Block is a nice way to highlight smaller prints, use up scraps or add interest to a simple block.*

- The center unit of this block is 6 1/2" with a 6" finish. To create the Economy Block center, select the focal/main fabric. Four squares are needed for the corner triangles; mix or match.
  - Cut a 6 1/2" square of the main fabric (this is a good place to fussy cut).
  - Cut four 3 1/2" squares for the corners. *Note: For this method, the corner squares should be half the size of the square + 1/4" to maintain the points at the top/bottom/sides ((6 1/2" divided 2) + 1/4" = 3 1/2")*
  - Draw a diagonal line on the wrong side of each 3 1/2" square (pay attention to the layout of the fabric if it is directional).
  - Position in corner of the main fabric, right sides together. Stitch on the line. Cut 1/4" away from the stitching line as indicated by the dotted line. Press the corner up.
  - Repeat for the remaining 3 corners. Press well. Unit measures 6 1/2" the same as the starting size of the main fabric.

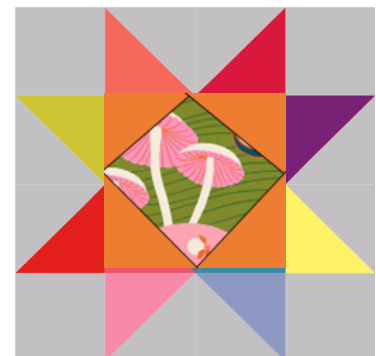
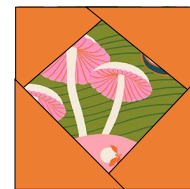
Economy Block



Mark wrong side of all four 3 1/2" squares.



Stitching line  
Trimming line



QUILTERSSELECT.COM

Pattern design and layout powered by

Design N QUILT™