



The Original non-slip ruler, developed for the Quilters Select Cutting System. Look for these and other Quilters Select products at your local independent Sewing or Quilt Shop.

www.QuilterSelect.com

ROTARY CUTTERS

- ☐ QS-ROTARY2 Select 45mm Deluxe Rotary Cutter
- ☐ QS-ROTARY60N Select 60mm Rotary Cutter
- ☐ QS-ROTARY28 28MM Rotary cutter

ROTARY CUTTER ACCESSORIES

- ☐ QSP-45RRB QS 45MM Rotary Replacement Parts Bundle
- ☐ QS-RB45M-1 Select 45mm Rotary Blade Replacements (1 pk)
- ☐ QS-RB45M-5 Select 45mm Rotary Blade Replacements (5 pk)
- ☐ QSP-60RRB QS 60MM Rotary Replacement Parts Bundle
- ☐ QS-RB60M-1 Select 60mm Rotary Blade Replacements (1 pk)
- ☐ QS-RB60M-3 Select 60mm Rotary Blade Replacements (3 pk)
- ☐ QS-RB28M-3 QS Rotary Blade 28M (3 pk)

CUTTING MATS

- ☐ QS-MAT1218 12" x 18" Dual Side Cutting Mat
- ☐ QS-MAT1824 18" x 24" Dual Side Cutting Mat
- ☐ QS-MAT2436 24" x 36" Dual Side Cutting Mat
- ☐ QS-MAT912N 9" x 12" Dual Side Cutting Mat
- ☐ QS-MAT3660N 36" x 60" Dual Side Cutting Mat
- ☐ QS-MAT14W 14" x 14" Cutting Mat on one side & Wool Pad on the other side
- ☐ QS-MAT14P 14" x 14" Dual Side Cutting Mat
Special \$2 donation to Dr. Susan Love Foundation

NON-SLIP MACHINE QUILTING RULERS 6MM Thickness

- ☐ QS-RUL3CL 3" & 1.5" Clamshell Machine Quilt Ruler
- ☐ QS-RUL4CL 4" & 2" Clamshell Machine Quilt Ruler
- ☐ QS-RUL5CL 5" & 2.5" Clamshell Machine Quilt Ruler
- ☐ QS-RUL6CL 6" & 1" Clamshell Machine Quilt Ruler
- ☐ QS-RUL3X12Q 3" x 12" Machine Quilt Ruler
- ☐ QS-RUL2X8 2" x 8" Machine Quilt Ruler

NON-SLIP RULERS 3MM thickness

- ☐ QS-RUL3X12 3" x 12" Non-Slip Ruler
- ☐ QS-RUL3X18 3" x 18" Non-Slip Ruler
- ☐ QS-RUL8X8 8" x 8" Non-Slip Ruler
- ☐ QS-RUL10.5 10.5" x 10.5" Non-Slip Ruler
- ☐ QS-RUL18X18 18" x 18" Non-Slip Ruler
- ☐ QS-RUL6X12 6" x 12" Non-Slip Ruler
- ☐ QS-RUL6X24 6" x 24" Non-Slip Ruler
- ☐ QS-RUL2.5 2.5" x 2.5" Non-Slip Ruler
- ☐ QS-RUL3.5 3.5" x 3.5" Non-Slip Ruler
- ☐ QS-RUL4.5 4.5" x 4.5" Non-Slip Ruler
- ☐ QS-RUL5.5 5.5" x 5.5" Non-Slip Ruler
- ☐ QS-RUL6.5N 6.5" x 6.5" Non-Slip Ruler
- ☐ QS-RUL8.5N 8.5" x 8.5" Non-Slip Ruler
- ☐ QS-RUL9.5 9.5" x 9.5" Non-Slip Ruler
- ☐ QS-RUL12.5N 12.5" x 12.5" Non-Slip Ruler
- ☐ QS-RUL1.5X12 1.5" x 12" Non-Slip Ruler
- ☐ QS-RL2.5X6.5 2.5" x 6.5" Non-Slip Ruler
- ☐ QS-RUL2.5X12 2.5" x 12" Non-Slip Ruler
- ☐ QS-RUL2.5X18 2.5" x 18" Non-Slip Ruler
- ☐ QS-RUL2.5X36 2.5" x 36" Non-Slip Ruler
- ☐ QS-RUL6.5X12 6.5" x 12" Non-Slip Ruler
- ☐ QS-RUL6.5X24 6.5" x 24" Non-Slip Ruler
- ☐ QS-RUL8.5X12 8.5" x 12" Non-Slip Ruler
- ☐ QS-RUL8.5X24 8.5" x 24" Non-Slip Ruler
- ☐ QS-RUL6X6P 6" x 6" Non-Slip Ruler - PINK
Special \$2 donation to Dr. Susan Love Foundation
- ☐ QS-TRISQU 3N1 - Triangle/Square Combo Ruler
- ☐ QS-60TRI QS 60 Degree Triangle 8.5" Ruler
- ☐ QS-60TRISET QS Twin Set of 60 Degree Half Triangle Rulers - One Right Side and One Left Side 60 Degree Half Triangle Ruler
- ☐ QS-RUL12.5D QS 60 Degree Diamond Ruler
- ☐ QS-RUL7.5TC QS Square It Ruler 7.5"
- ☐ QS-RUL8.5TC QS Square It Ruler 8.5"
- ☐ QS-18DRE QS Dresden Ruler 18 W/Coating
- ☐ QS-30DRE QS Dresden Ruler 30 W/Coating



Did you know... there is an entire community of quilters sharing and stitching with us on The Official Quilters Select Group?

Join the Party **TODAY!**

You can sign up for the private group here:

- All skill levels welcome!
- On-going Stitch Alongs!
- Welcoming Quilting Community!



Design **N** QUILT®

- **Easy** to Use quilt layout and design program!
- Design from **block library** or create **custom blocks**!
- **Preview** colorways, import fabric or design your own!
- Traditional piecing!
- Foundation piecing!
- Appliqué!
- Quilt motifs!

Know Before You Sew!

Try it for FREE!



The Quilters Select Cutting system was designed with you in mind!

Quilters Select Rulers:

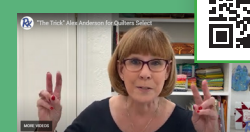
- Feature a unique non-slip coating that covers the entire surface of the ruler to prevent slipping.
- Prevent hand-fatigue.
- Are marked in 1/8" increments and include multiple angle markings making them multi-purpose.
- Include site-lines for more precise measurements.
- Are numbered in two directions for right/left hand use.

Quilters Select Mats:

- Are multi-layered with a light & dark side.
- Were created with versatility in mind: numbered in both directions around the perimeter, 1/8" increment measurements & multiple angle markings.

Quilters Select Rotary Cutter:

- Ergonomic, weighted handle for comfort.
- Magnetic blade replacement system.
- Safety close.
- Made for both right/left hand use.



Scan here to watch Alex Anderson demonstrate how the Quilters Select rulers, mats, and cutters work together for exceptional accuracy!