

2025 - Whirligig Garden Stitch Along – Week 14

Raw-Edge Applique

Raw-Edge applique is a technique where fabric shapes are attached to a background fabric without turning the edges under, leaving the raw edges visible. This technique is fun, easy and perfect for adding that final touch of whimsy to our garden.

Benefits

- Easy - Great for beginners
- Fast – Finish projects quickly
- Versatile – Create any shape

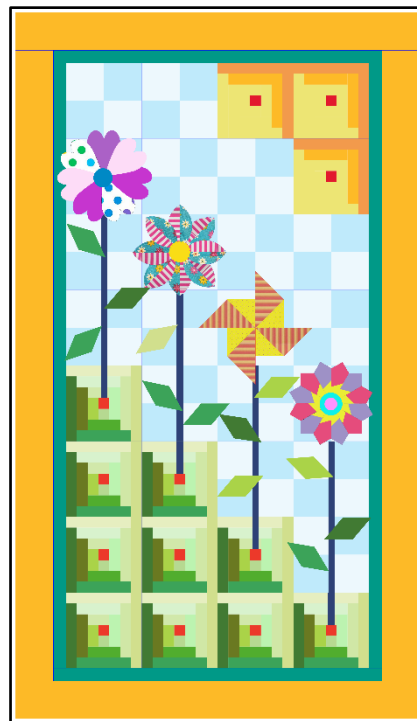
To Sew or not to Sew

A paper-backed fusible webbing is used to adhere the shape to the background and helps minimize fraying.

- A permanent fusible web such as Floriani Press N Bond provides a permanent bond with the fabric and stitching around the edges is optional
- A temporary fusible web such as Quilters Select Appli-Stick temporarily secures the shape to the background and is repositionable. Secure with a straight stitch, zig-zag, or decorative stitch for a permanent hold

Supplies

- Novelty fabric
- Paper-backed fusible web as discussed above
- Scissors



Pro Tip

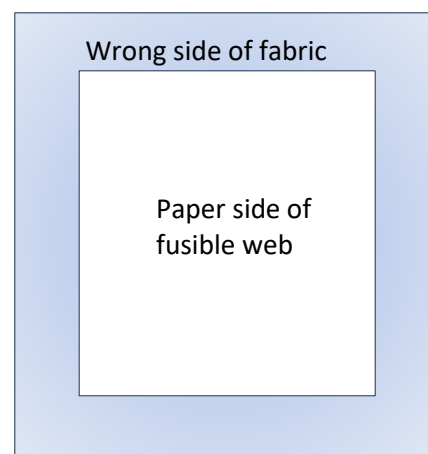
Heat requirements for fusible webbing and individual irons vary; read the directions and test for best results.



Quilt Along with QUILTERS SELECT®

Technique

- Identify the motif you wish to cut from the fabric
- Cut a piece of fusible web big enough to cover the entire shape
- Place fabric wrong side up
- Place the webbing fusible side down. The paper side should be facing up
- Fuse in place using an iron
- Cut around the image
- Remove backing
- Place on the background and fuse
- Stitching in place is optional



Pro Tip

Rough cutting around the motif before doing the final cut will make it easier to handle and cut precisely.

Finishing up

- Trim excess threads.
- Use a lint roller to remove loose threads etc.
- Stitch around the entire perimeter slightly less than ¼ inch away from the edge to prevent stretching.
- Press flat before quilting.
- Mist the pinwheel with water and stuff the flaps with a tissue to create the 3-D effect. Let dry overnight.

Quilt and bind your garden as desired.