

## 2025 - Whirligig Garden Stitch Along – Week 13

### Applique Stitches

Each whirligig, a.k.a whirli, varies in construction technique, size, shape, color and personality. Arranging these unique components into a balanced composition can be fun but also challenging.

### *Supplies Needed:*

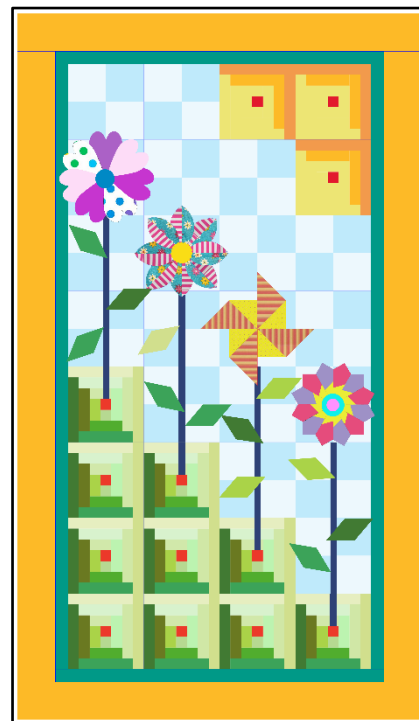
- 60 wt or 80 wt Thread
- 40 wt Thread
- 75/11 or 80/12 microtex needle
- Open toe foot
- 6x6ish fabric scrap
- Tearaway stabilizer
- Glue stick

### *Applique Stitching Techniques*

- Blanket Stitch
- Zigzag Stitch

### *Preparation*

- Stitch stems and leaves in place before stitching the whirlis.
- Cut tearaway stabilizer into squares (one per whirli) slightly larger than the whirlis. Fuse stabilizer to the back of the quilt top covering the area where each whirli will be placed.
- Fuse the daisy applique in place.
- Secure the remaining whirlis to the background using a glue stick or pins.
- Fuse the stabilizer to the back of the fabric scrap and keep this at your machine to test stitch settings/



### Pro Tip

*Watch the selecting stitch sew out to become familiar with its sequence. Learning the anatomy of the selected stitch enables accurate pivoting around curve and corners.*

# Quilt Along with QUILTERS SELECT®

## Machine setup

- 60 or 80 wt thread in the bobbin
- 80/12 Microtex needle
- Open toe foot
- Upper thread of your choice
- Set to stop with the needle down
- Set pivoting feature if available

## Stitching Path - strategies

Study each unique shape and plan the path of travel before starting to sew. This can minimize excessive starts and stops, pivoting, and unsightly thread build up. Select your preferred stitch and thread.

- Start sewing in an area where another applique will cover it. Use a reverse stitch to secure.
- If there are no other appliques to conceal the start/stop, pull the thread tails to the back and tie a knot.
- The daisy and heart will have a similar path of travel.
- The Dresden is stitched in the ditch. Additional decorative stitching can be added around the outside.
- For the pinwheel, use the straight stitch applique method (top-stitch) and stop about ¼ inch from the overlapping flap. This will help create a 3-dimensional effect.

